

# Commitment Integrity Reliability

**100**  
— 1926-2026 —  
**GRAHAM**

## Delivering Solutions To Build Tomorrow

Purpose-built structures and vital infrastructure delivered with the discipline and precision national defence projects demand.

Backed by our values of commitment, integrity, and reliability, Graham works collaboratively with our clients and partners to design, build, and deliver facilities and infrastructure that perform when it matters most.

[grahambuilds.com](http://grahambuilds.com)



Our expanding reach.

## BUILDING ACROSS NORTH AMERICA

# 500+ 29

Projects Across North America

Permanent Office Locations



Our growing workforce.

## INDUSTRY EXPERTS

ESTABLISHED

# 1926

# 3000+

EMPLOYEES

# 8900+

CRAFT CAPACITY

## EMPLOYEE-OWNED

Graham is financially strong.

## FINANCIALLY CAPABLE

REVENUE  
\$4.8 BILLION

BACKLOG  
\$5.9 BILLION

REVENUE BREAKDOWN  
CANADA: 60%  
US: 40%

## OPERATING DIVISIONS



BUILDINGS



INDUSTRIAL



INFRASTRUCTURE



SERVICES



DEVELOPMENT

## GRAHAM GROUP OF COMPANIES



GRACORP



MILENDER WHITE



MOLTZ CONSTRUCTION INC.



XL INDUSTRIES

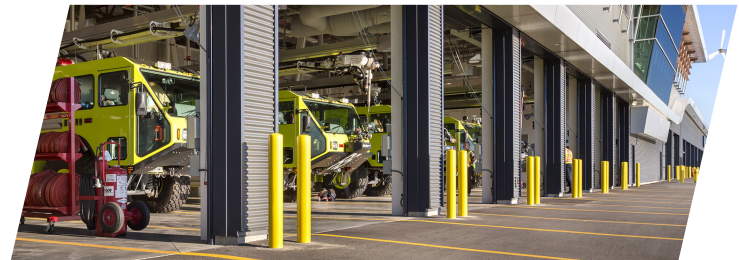
# 85+

Defence, military, police, justice and correctional projects successfully completed.



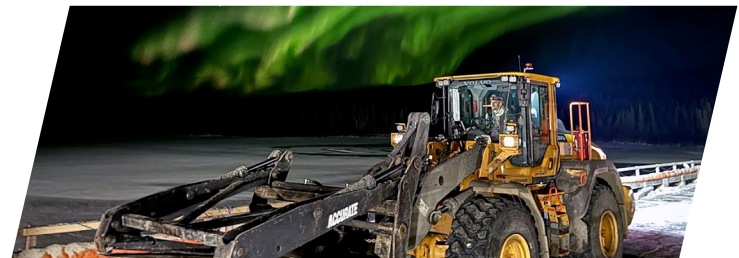
# 12+

Defence Construction Canada (DCC), Department of National Defence (DND), projects in the past 25 years.



# 2300+

Collaborative delivery projects, including CM, DB, Modified and Progressive DB, IPD, P3, and Alliance.



# 1930s

First defence construction project.



## CONTACT

**Raegan Wheler**

*Director, Defence Sector*

raegan.wheler@graham.ca



[grahambuilds.com](http://grahambuilds.com)